



Fauquier Chamber of Commerce

Melissa German
October 22, 2024

An Invitation to Brave Space

- You are invited to be yourself in this brave space:
 - Together we will create brave space
- Because there is no such thing as a “safe space” --
 - We exist in the real world.
- We all carry scars and we have all caused wounds.
- In this space we seek to turn down the volume of the outside world,
 - We call each other to more truth and love.
 - We have the right to start somewhere and continue to grow.
- We have the responsibility to examine what we think we know.
 - This space will not be perfect.
 - It will not always be what we wish it to be but
 - It will be our brave space together,
 - And we will work on it side by side.
- Attributed to Beth Strano and Micky ScottBey Jones

Vision Statement

Equitable, thriving, and just communities powered by healthy nonprofits.

Mission

We are a champion, learning partner, and advisor for Virginia nonprofits.

Values

We are centered and guided by our values of courage, equity, collaboration, and excellence.



7 ACTIONABLE PRINCIPLES

Inspired by the opportunity to strengthen local nonprofits and relationships between nonprofit organizations and their funders, CNE unites local wisdom and experience with national frameworks and leading practices



7 Actionable Principles for a Strong Social Sector

Inspired by the opportunity to strengthen local nonprofits and relationships between nonprofit organizations and their funders, CNE unites local wisdom and experience with national frameworks and leading practices in these **7 Actionable Principles for a Strong Social Sector**:

1 CREATE STRATEGIC BUDGETS



2 MANAGE FINANCIAL POSITION



3 BUILD RELATIONSHIPS



4 PRIORITIZE EQUITY



5 DEVELOP LEADERS



6 COLLABORATE WITH COMMUNITIES



7 EVALUATE IMPACT



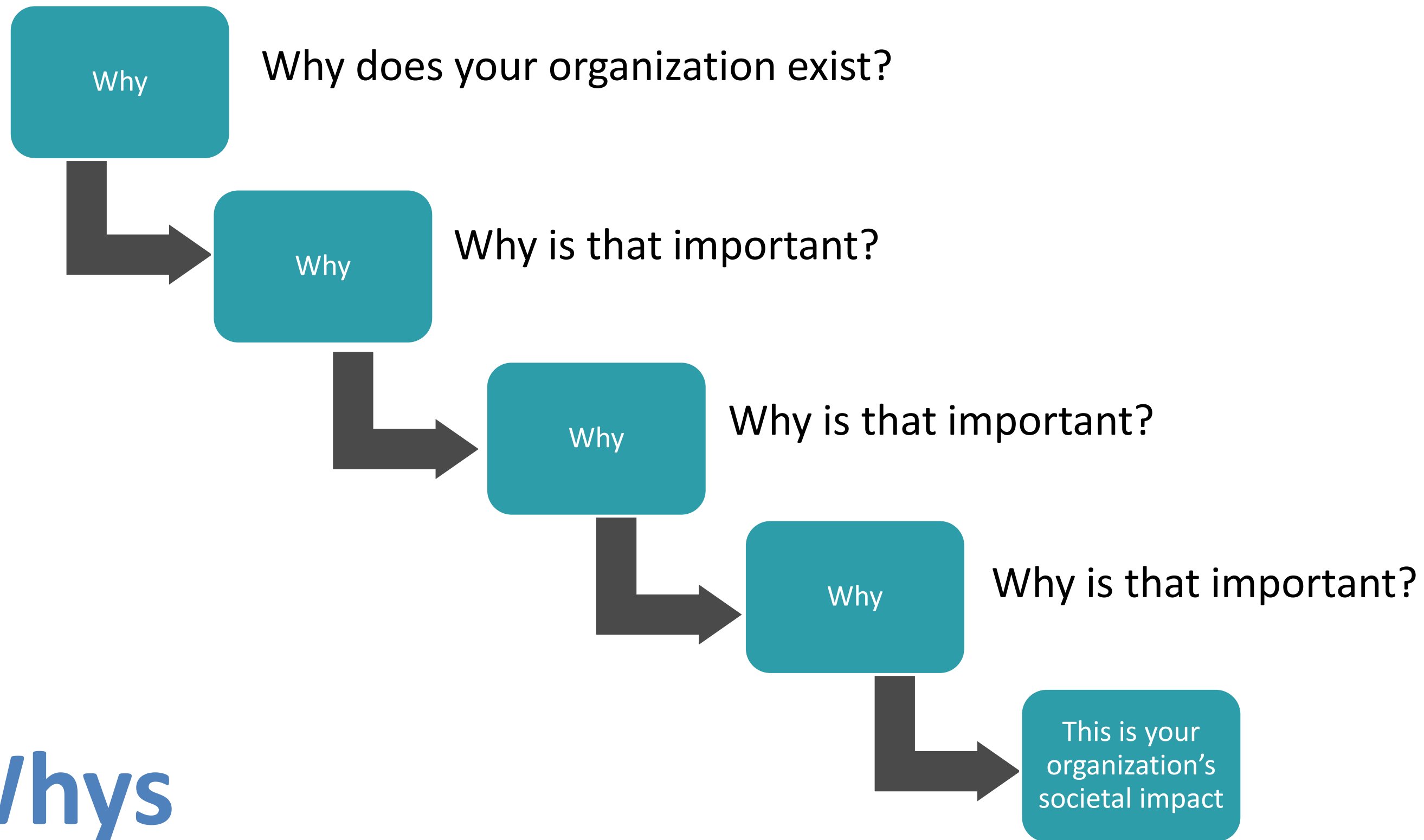
To learn more visit <https://7principles.thecne.org/>

**WE BUILD
COMMUNITY.**

The image features a white background with a pattern of vertical teal raindrops of varying lengths and thicknesses. A large, solid teal rectangle is centered on the page. Inside this rectangle, the text "First... WHY?" is written in white, with "First..." on the top line and "WHY?" on the bottom line in a larger, bold font.

First...
WHY?

5 Whys



PATH Resource Center



PATH
Volunteer Hub



PATH
Community Link

HumanKind



Technical Assistance & Consulting

Do you have questions about board governance, organizational structure, fundraising, compliance or general nonprofit management?

Ask CNE!

We're available to provide resources and thought partnership when you need it. Are you experiencing change or challenge? CNE is also available for consulting to address more complex issues.

Board Education Sessions

30 minutes of content, activities, and facilitated discussion during a regularly scheduled board meeting on a core governance topic such as the board's roles and responsibilities, shared leadership between the Executive Director, and the board's role in philanthropy.

Responsive Programming

Through one-hour workshops, multi-day advanced trainings, and intensive leadership academies, CNE leverages expertise and resources to provide engaging professional development and capacity building services.

Community of Practice

CNE members constitute a collaborative and supportive platform for knowledge sharing, peer support, and collective advocacy, enhancing their ability to drive positive change and maximize social impact within the community.



**FOUNDATION
CENTER**
Knowledge to build on.



Lending Library
Nonprofit Leading Practices



What does Community Link do?

Community Link provides personalized assistance to get you in touch with community resources that can help with whatever your needs might be. All communication with Community Link is free and completely confidential.

We can help find services related to housing, transportation, access to healthcare, food assistance, childcare, financial assistance and more.

Translation services for Spanish speaking community members are available upon request.

How does Community Link work?

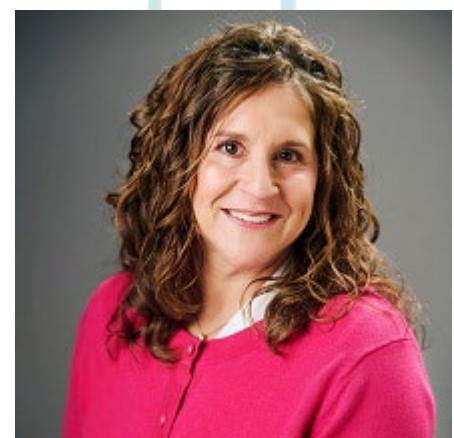
Community Link Manager, Yesenia Reyes, works with organizations and people in our community on a case by case basis. This means that we can help people on an individual basis by connecting them with nonprofits and other organizations who meet a specific need.



PATH Volunteer Hub is a valuable resource in engaging, recruiting and managing volunteers. Using a Galaxy Digital platform letsvolunteer.org allows you to post organization specific needs and community members interested in volunteering are able to match their skills to your needs.

Lynn Lauritzen, the Volunteer Hub Manager is there to help you with the platform, dive deeper into Volunteer Management & Engagement or facilitate your organization's participation in the Service Enterprise Diagnostic, Index for Volunteer Engagement (IVE).

The IVE is Service Enterprise Diagnostic is statistically valid and reliable and serves as an assessment, a diagnostic, and a planning tool. The SED/IVE is not meant to serve as a report card, but rather a learning tool for the organization. Based on responses to the diagnostic, the tool provides you with a list of recommendations for how to deepen and expand practices for volunteer engagement.





Get In Touch

Stay connected with us via social media!



mgerman@thecne.org



540-680-4147



www.thecne.org



[Twitter](#)



[Instagram](#)



[Facebook](#)



[LinkedIn](#)